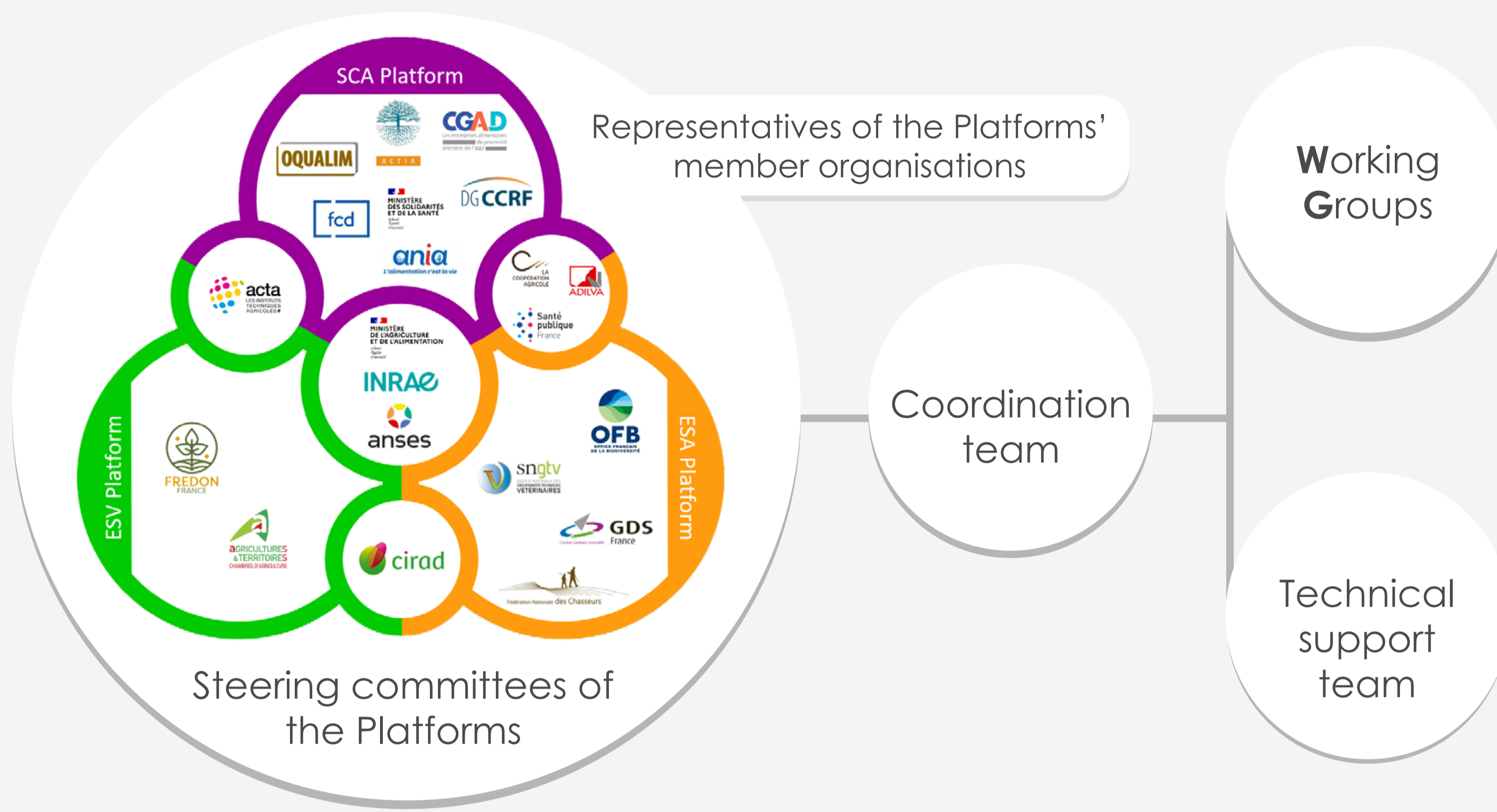


The integration of animal health, plant health and food chain surveillance: A unique approach towards “One Health” surveillance in France

Sophie CARLES^{1,4}, H el ene AMAR^{2,5}, H el ene BERNARD^{1,5}, Gaud DERVILLY^{1,5}, Renaud LAILLER^{3,5}, Yves LAMBERT^{2,4}, Lucie MICHEL^{1,6}, Anne QUILLEVERE^{3,6}, Samuel SOUBEYRAND^{1,6}, Martin STRUGAREK^{2,6}, C eline DUPUY^{3,4}.

1. French National Research Institute for Agriculture, Food and the Environment, 2. French Ministry of Agriculture, 3. French Agency for Food, Environmental and Occupational Health and Safety, 4. French Animal Health Epidemiological Surveillance Platform, 5. French Food Chain Surveillance Platform, 6. French Plant Health Epidemiological Surveillance Platform.

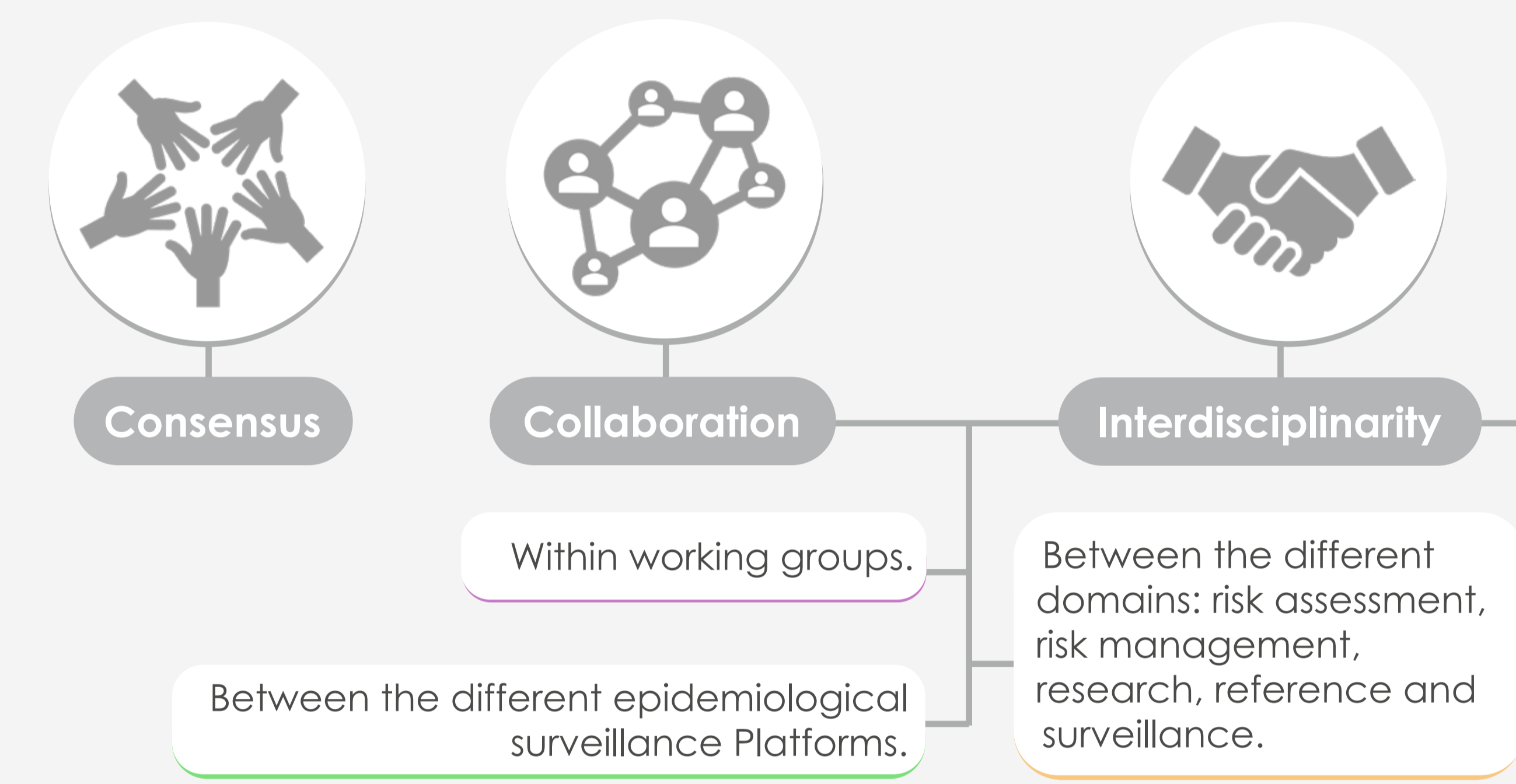
An innovative approach to improve surveillance efficiency



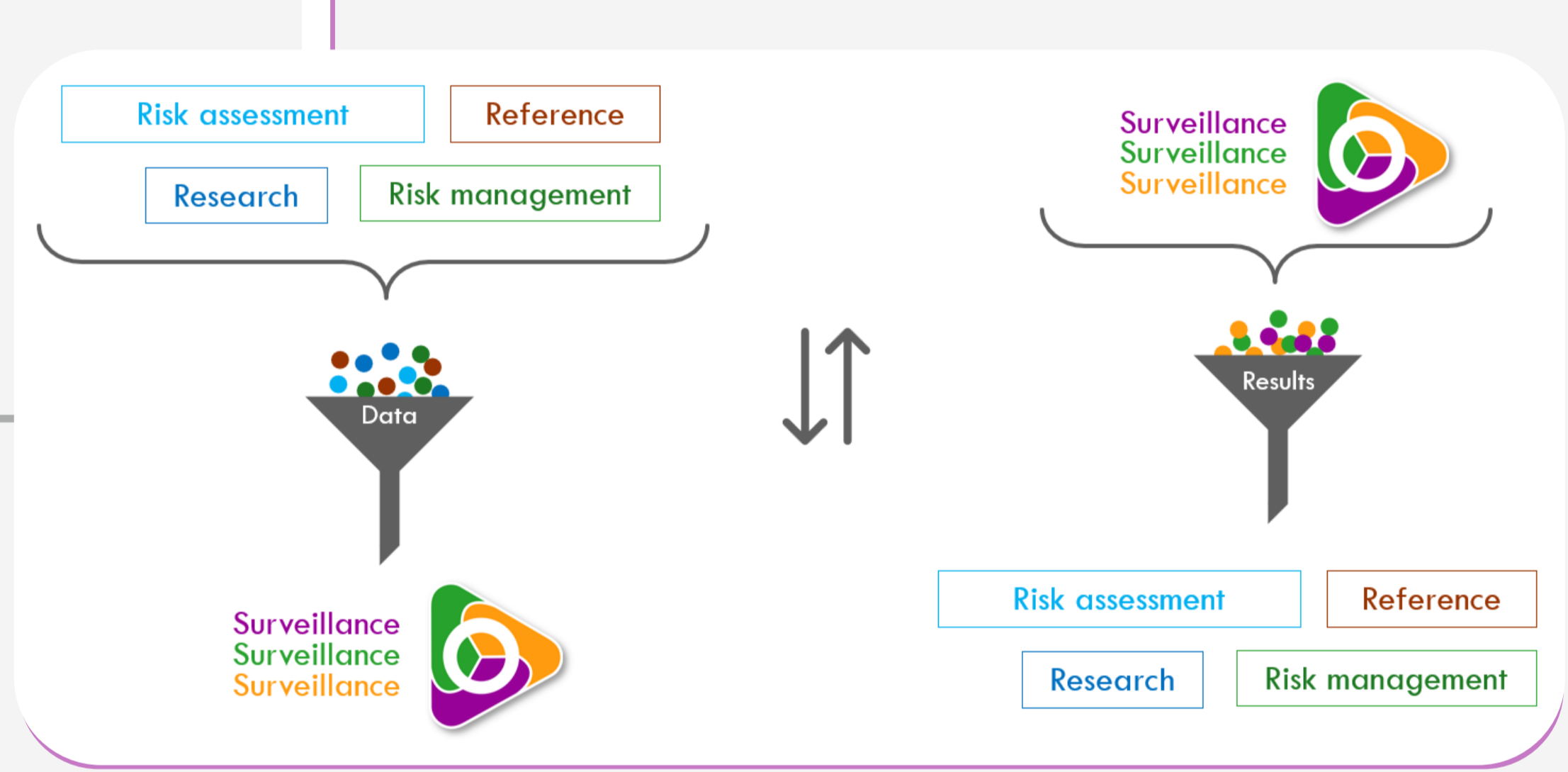
Private and public organisations part of the steering committee : French competent authorities, scientific support organisations, agricultural technical institutes and representatives of public laboratories, farmers, veterinarians and professionals from the production, processing, distribution and catering sectors, delegated bodies.



Three values applied at all levels of Platforms' organisation



Platforms' scope = Surveillance but in collaboration with other domains



Concrete implementation:
Experts from these 5 domains in Platforms's WG
200 experts · 70 organisms in ESA Platform's WG
138 experts · 52 organisms for SCA Platform's WG
180 experts · 40 organisms for ESV Platform's WG

Concrete actions to improve surveillance efficiency in a One Health approach

Promote integrated surveillance for salmonellosis: all along the food chain and sectors. A dedicated WG common to ESA and SCA Platforms.

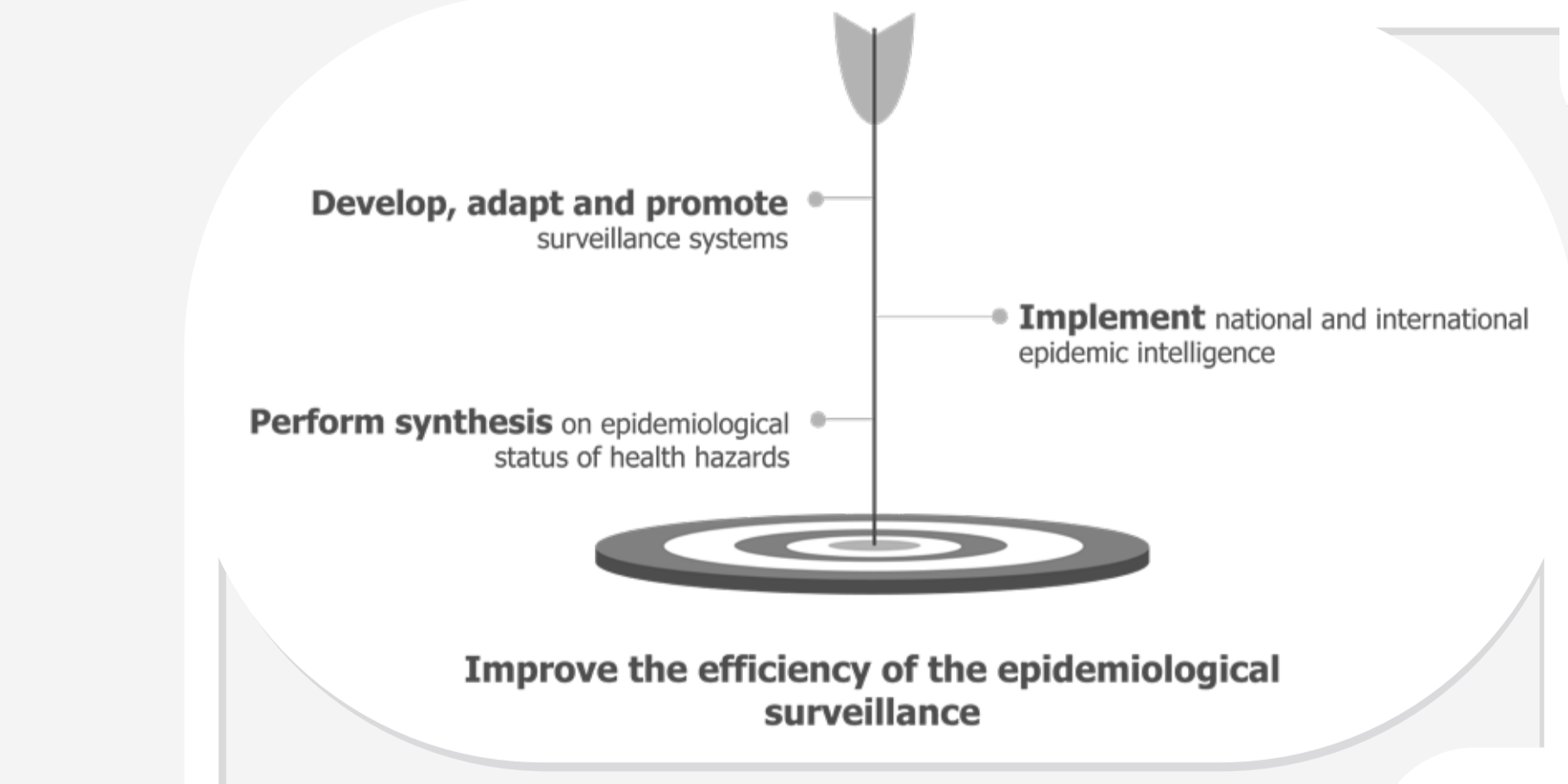
Automated surveillance reports. Example: quarterly report for RESA VIP: surveillance system on swine flu. Objective: better understand viral swine strain dynamics to early detect abnormal evolution potentially dangerous for animal or human health.

“Alone I go faster, together we go further”
The French epidemiological Platforms = suitable framework for a concrete and sustainable One Health approach.

3 Platforms to facilitate a One Health approach



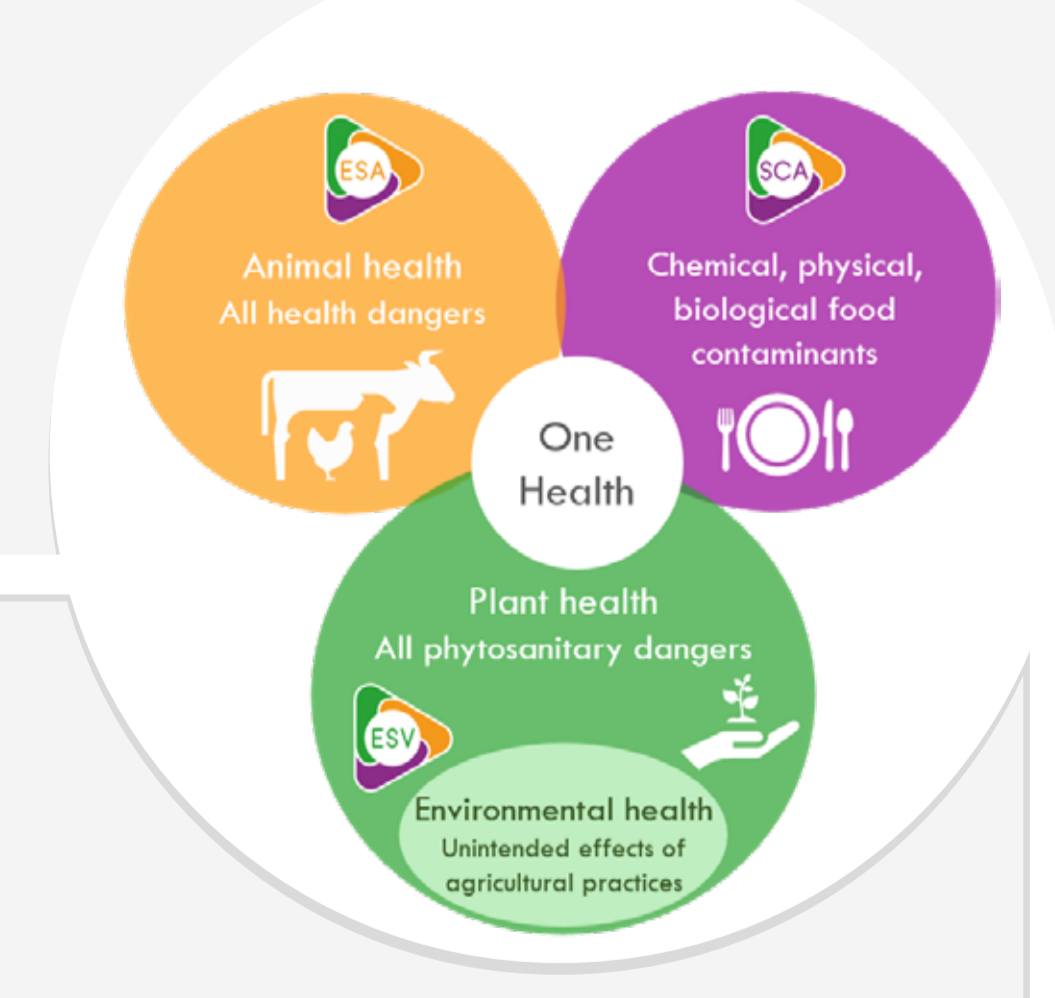
Think together on the way to improve Platforms' One Health Approach
A 3 Platforms' working group dedicated to improve the One Health approach of existing WG and to discuss about new topics to investigate in a One Health approach within Platform's WG.



Annual synthesis of disease surveillance data in French peer review journal. Example: Tuberculosis and Sylvatub WG.

Common Epidemic Intelligence (EI) productions. Example: - Tick born encephalitis disease by SCA and ESA's EI teams. - COVID 19 and animals: an animal health approach with public health added value.

Common surveillance issues = find together solutions. Data quality working group. A 3 Platforms' data quality guidelines with basics and concrete examples.



Adapt existing tools to other sectors. Animal health OASIS assessment tool developed for plant health and food surveillance sectors → a dedicated 3 Platforms' working group.